

*Cold Regions Design & Construction in a
Warming World*

Alaska's Policy Response



**12 January 2007 – University of Alaska, Anchorage
Mead Treadwell
Chair, U.S. Arctic Research Commission
Senior Fellow, Institute of the North**

Changes across many sectors of Arctic

Plants &
Vegetation



Ocean & Climate



Snow & Ice



Fish, Sea Birds
& Marine Mammals



Forest &
Grassland



Freshwater,
Lakes & Rivers



Permafrost
& Tundra



Indigenous
Culture



Wildlife &
Waterfowl



Sea Ice
& Icebergs



Human Health



Land Use &
Agriculture





Arctic Energy



THE
ARCTIC
ENERGY
SUMMIT



AN INTERNATIONAL POLAR YEAR EVENT



ARCTIC ENERGY
Themes



RURAL



EXTRACTIVE



SUSTAINABILITY

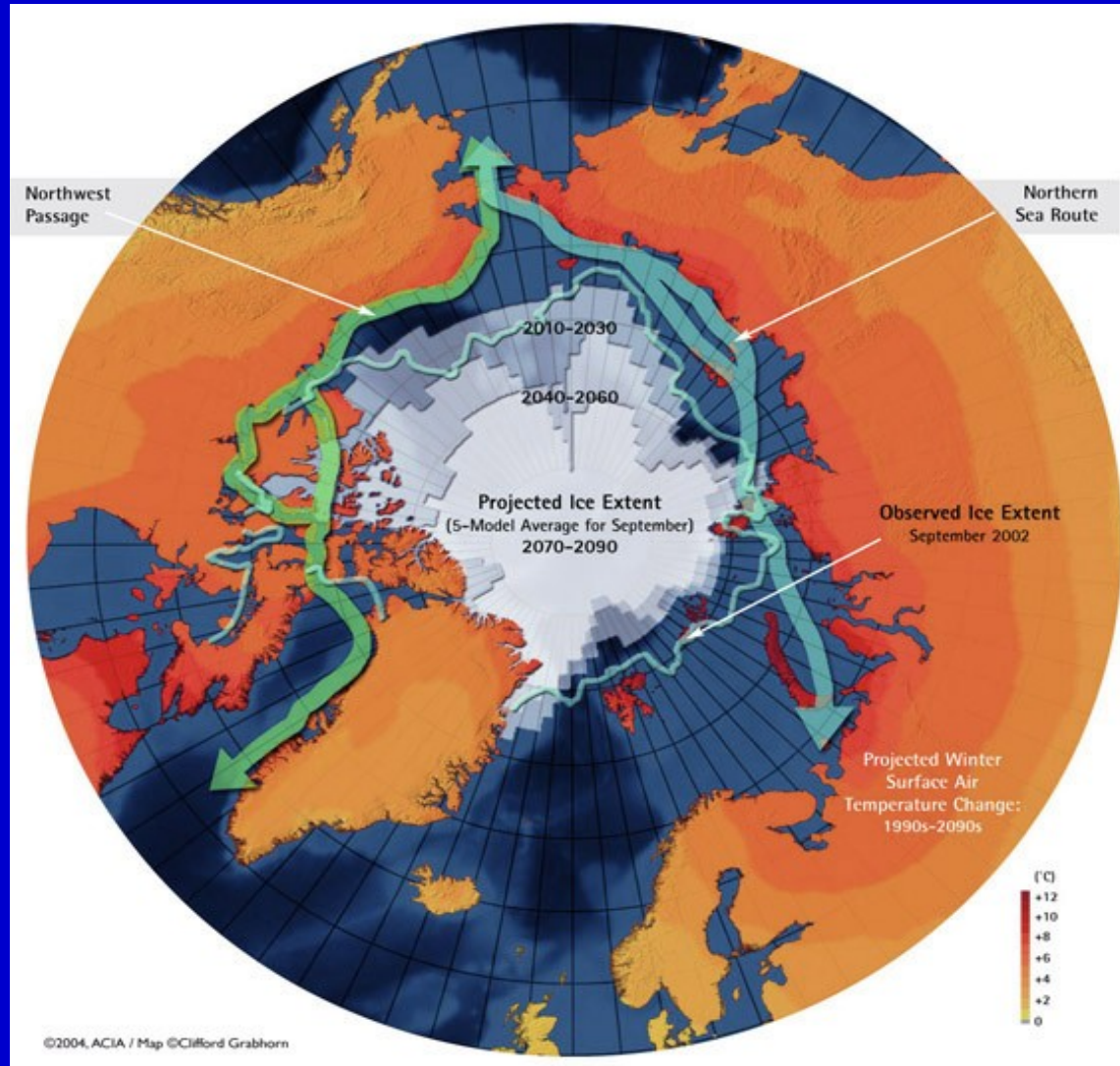


USARC ECUMENICAL BELIEF



- The United States must maintain its global maritime capability—as a government AND as a Nation
- If the U.S. does not exercise its visible maritime presence in the Arctic Ocean—we cede it to whomever wants it!

ACIA Key Finding #6: Reduced sea ice is very likely to increase marine transport and access to resources.







**Mead Treadwell,
meadwell@alaska.net**

**INSTITUTE OF THE
NORTH**

